



The Bungonia Times

The Community Grape Vine

Circulation 375

Vol.13-No1

February,2004

CLEAN-UP AUSTRALIA
SUNDAY 7TH. MARCH, 2004
10AM. AT THE HALL

BAGS & GLOVES & REGISTRATION FORMS AT THE HALL ON
FRIDAY EVENING 5th. MARCH

IF YOU WANT A BAG EARLIER CALL 4844 4266

LEAVE FILLED BAGS & OTHER RUBBISH COLLECTED FROM THE ROADSIDE
OR PARK AT THE HALL

REMEMBER STOUT SHOES, HAT, GLOVES AND SUNSCREEN

ENQUIRIES: M. McGINITY 4844 4266

SPONSORS: **INGHAMS ENTERPRISES**

LET TALK RUBBISH

The transfer bins on The Lookdown Road are being used by some irresponsible residents for general rubbish i.e.fencing wire, lounge chairs, old stoves, old doors etc. These items must be taken to the tip. Also a number of plastic bags of rubbish have been left beside the bins to be scattered by animals, lift the lid, it only takes a moment and keeps the site tidy.

DO THE RIGHT THING

This issue was printed by Business Requisites
Russell Lane, Goulburn

PLEASE NOTE CHANGES TO OUR PRICES

Advertising Charges:

For Sale/Wanted \$3.00 (Maximum 3 lines)

Quarter Page \$7.00 Half Page \$12.00

Double Page at Discount \$40.00

Business Card Size \$5.00

Full Page \$24.00

BUNGONIA TIMES DEADLINE: 12 noon 20th of each month

Please ensure that all contributions are received by the above time and date:

Home Delivery by Mail: Send your mailing details to June Wade, 106 Gumnut Crescent, Bungonia, 2580 with a cheque for \$20.00 to cover the cost of postage stamps and envelopes for one year (11 issues). Please make your cheque payable to "The Bungonia Times".

This newspaper is COMPILED and DELIVERED by volunteers as a service to the community - if you have any questions regarding this publication or its delivery please feel free to phone one of the contacts and we will endeavour to help you.

ALL ADVERTISING COPY MUST BE ACCOMPANIED BY PAYMENT

Cheques to be made payable to the

BUNGONIA TIMES

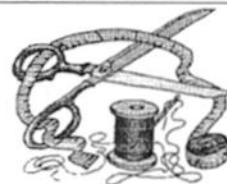
Copy and payment can be placed in the

locked post box in front of the Hall or sent to:

Judy Knott: 336 Inverary Road, Bungonia, NSW 2580

Patchwork & Quilting Classes

Every Monday 9 am until 1 pm (not on public holidays)



Well, we all survived another Christmas and now we have to busy ourselves to loose those extra kilo's we gained but we hope you had a wonderful Christmas and New Year celebrations and are ready for yet another year!

As some of you may be aware from our last Market Day display, the quilters had quilts for the Children's Hospital in Sydney for Kids suffering with terminal illness' and organ transplants. They were delivered to the hospital on December 20th by Gail Waddell, and there were a massive 23 of them and I believe they all found homes. Gail also said that some of the children's parents were brought to tears and the children themselves ecstatic.

The quilts took our time and a few dollars but obviously well worth it and we plan to do it again this year but extend our quilts of love to the children at Ronald McDonald House as well. We thank all those out there who had a hand in helping us with a little of the material, it was well received.

If you would like to become a part of our group for either learning to quilt or just breaking free of your four walls at home, you are quite welcome, come along for a cuppa and enjoy a morning out.

Morning Tea Roster: 3 Feb: Carol, 10 Feb: Helen, 17 Feb: June, 24 Feb Loraine

Contacts: Sandra Williams 4844 4369, Cherie Jenkins 4822 4241

or Margaret Lehmann 4844 5190

COUNTRY WOMEN'S ASSOCIATION

PRESIDENT: KATH HOGG

SECRETARY & PUBLICITY OFFICER: COLLEEN COOPER 4821 1856

TREASURER : JUDY KNOTT 4844 4478

Since our last newsletter our members have enjoyed a delicious lunch at Cascades Restaraunt, over indulged during the Festive Season, worked very hard on a general clean up of the CWA grounds and room, had another interesting and most enjoyable trip to the Mt. Wayo Lavender Farm, as well as practicing our cooking and doing handicraft ready for the Group Competitions in March.

Birthday Wishes for February go to our Pesident Kath .

The February meeting will be held on Thursday the 14th at 10am. Please feel free to call in for a cuppa if not for the meeting.

Till next time:

Colleen

Bungonia Park Trust

- Work continues in the Park with a working bee held 11 Jan.

Workers-Ken and Diana Chris and Allan Moran ;Moira and Frank McGinity,John Manning ,Anne Williams ,plus Phil Fordham(contractor). The aim was to clear regrowth of willows and undertake the mulching of hawthorns along the creek as far as the waterhole under the bridge. An old fence was removed behind the old school and access to the creek is now much clearer. The shire has extended its mowing area. Plantings seem to be mostly well established despite the harsh conditions and all of the Pistacios(decorative street trees lining the road) have survived.

- The creek zone is beginning to resemble its original state of a 'chain of ponds' sheltering in native vegetation before the introduction of exotic weed species .
- A controlled baiting has cleared some rabbits-but ,you guessed it –they're breeding "like rabbits"!
- War Memorial Flagpoles have been gravelled; the rosemary gardens are bushing up.
- Recreation;-The Park was enjoyed by 40/50 people during the New Year's Day challenge cricket match between Windellema and Bungonia. There was some excellent play despite the 39degree heat. The match was cheerfully acknowledged to be a draw! Thanks to the Moran family for the temporary screening fencing behind the wicket and to John Wiggan for the spacious temporary shade shelter.

Heather Norri had generously offered the use of the historic old cricket ground on her land .However, as there is a question of Public Liability and access to toilet amenities, we were not able to take up this kind offer. Maybe next year.?

- Two new Park Trustees were appointed Anne Williams and Ken Moran. Other trustees re appointed by the Minister. Some applications are pending.

There is plenty of mulch for purchase @ \$15.00 a trailer load ;Paul Bayliss and Moira McGinity are the contacts(see newspaper contacts page.)All proceeds go to supporting the village beautification .

Next Meeting of the Park Trust ;Friday 6th Feb 2004 at 7.30 pm ; All welcome.

RED-NAPED SNAKE:

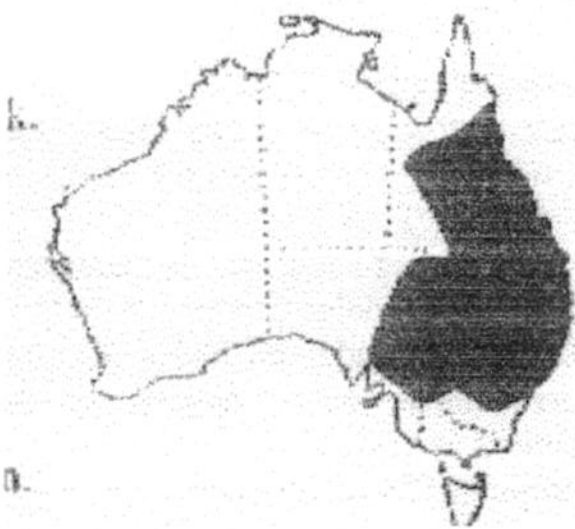
Furina Diadema

Venomous but not dangerous:

A small slender snake with a slightly flattened head, barely distinct from its neck.

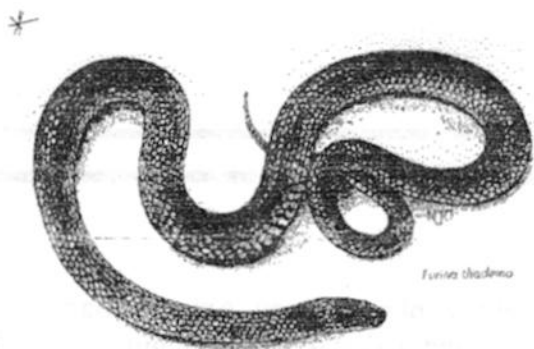
It is distinguished by its glossy black head and neck and a bright red or orange crescent, oval or diamond shaped patch on the back of the head. The eyes are small and black with a round pupil, and there is a white streak along the upper lip. The scales are smooth, glossy and water-repelling, rich reddish-brown and edged in black to form a net like pattern on the back. The belly is white or cream.

Behaviour: This ground-dwelling nocturnal snake shelters by day beneath rocks, logs, leaf litter, in abandoned burrows, termite mounds and in deep cracks in the ground; and is sometimes found sharing a shelter with several others. It feeds year round, but is more active in the warmer months.



It searches for skinks in their night-time retreats, slipping stealthily into cracks, crevices, burrows and other confined spaces, aided by its slender head and forebody, subduing its victims by constriction as well as venom. If threatened or alarmed it raises its forebody high off the ground, holds itself stiffly and thrashes around, striking repeatedly, but usually with its mouth closed, only biting if severely provoked.

Development: They mate in late spring or early summer, and females lay 1-10 eggs per clutch, producing more than one clutch a year in subtropical areas. The eggs hatch in January or February in cooler areas, and the hatchlings are about 12cm long. They



mature in their first year.

Diet: Skinks,

Habitat: Dry sclerophyl, forests, woodlands and tussock grasslands; from the humid coast and arid inland areas on the ranges, slopes and plains, in sites with rocky outcrops.

Size: to 40cm long. Females are larger than males.

Midbody Scales: 15 rows

Status: Endangered in Vic. sparsely distributed elsewhere.

HELP CLEAN-UP AUSTRALIA ON SUNDAY 7TH. MARCH

Each year the Bungonia residents do a marvelous job of clearing the roadsides and the Park of rubbish. Unfortunately people continue to throw away cans, bottles, papers etc. and to leave remnants of tyres on the roadside. Your help is needed on the 7th. March. Bags and forms will be at the Hall on Friday for those who want to collect bags on the way home from work. Ring me if you want bags before then. All filled bags and rubbish to be at the Hall Sunday night for collection by the Shire on Monday. The main Clean-up will begin at the Hall at 10am. on Sunday.

For any inquiries contact **Moira McGinity 4844 4266**



Bungonia Rural Fire Service.

On Friday the 19th December 2003 a few of us gathered at the fire station to celebrate Christmas and to draw the Christmas raffle. a B-B-Q was supplied, salads, nibbles, sweets were bought by the members also B.Y.O.G. a great time was had by all, than the raffle was drawn 1st choice drawn by Karina Edwards was the Toys won by J & D MacDonald ticket No 1694 2nd choice drawn by Amy Tapper was won by Elaine Lang from Taralga who chose the wheelbarrow and hamper, ticket No 2424. 3rd choice was the Dingo back-hoe drawn by Eric Dole ticket No 1677 won by Cherie Jenkins, 4th choice was won by Anne Hollis with ticket No 2102.

John Edwards our fire captain thanked everyone for coming and to all those who helped throughout the year. He wished everyone a safe and happy New Year and hopes that there will be no fires this season.

The next meeting will be held on the second Friday of February 13th 2004. Please be there

BUNGONIA PROGRESS ASSOCIATION INC.

The next meeting is on **Monday, 9th. February 7.30 at the Hall**

Hall Extensions: Council has passed the plans and we are about to seek quotes. If interested parties want copies of the plans Barry Storm will copy them from his originals. Any questions should be directed to the Committee, Ken Moran 4844 4234, Anne Williams 4844 4228 or John Wiggan 4844 4228.

Hall ownership: Robert Mowle will attend the 9th. February meeting to discuss the option of transferring Hall ownership to the Shire. Amalgamation with Goulburn City Council is a new factor since this proposition was first mooted. The very high cost of public liability insurance and the difficulty of even getting cover are the reasons for the Association exploring the ways of removing this cost.

Clean up Australia: Sunday, 7th. March. As usual bags etc. will be at the Hall from Friday evening so if you want to clean up your bit road, collect a bag on the way home on Friday night if you can't do the clean up on Sunday. Leave the filled bags at the Hall on Sunday because the Shire always takes the rubbish away on Monday. A special appeal to the residents along the Jerrara Rd. to take part.

Contact Moira McGinity 4844 4266

Wine & Cheese Night. We are planning another Autumn Wine & Cheese night so watch this space in the March issue

Bungonia and District Historical Society Inc.

(2004 is the "Year of the Built Environment")

- History on Market Day –the table of exhibits attracted much interest,particularly sketches and photos of the village,artefacts and books;souvenirs sold well.
- The village Project-Pictures maps ,history of the sites and owners ;If you have photos you would lend to be scanned and returned ,please let the History group know.Perhaps you can copy them onto CD yourself and are willing to give us copies for the Village History Project.
- School Project Research is getting under way on the old school.Shirley Smith Corraline Engert,Margaret Taylor, Diana Moran and Moira Mc Ginity have a special interest in this area.
- Workshops for conservation of fragile materials are being planned for this year.
- An archiving system is being set up.
- A Timetable of Digs when the UNSW will be continuing the investigation into the Williams ruins is expected soon.
- A computing workshop given to members by Ken was successful .
- Archives resources workshop has been attended by Corraline.
- Guest speaker; Margaret Taylor attended our meeting Jan 10 to discuss the history of the School. Margaret has become our newest member,
- Site visit ;

Jacqua Homestead on land granted 1828 ,was generously opened to the members who recorded this restored gem of wattle and daub construction .Brad pointed out the early carpentry style(said to be by the same carpenter as that of r of Lumley Park homestead) We visited and photographed Jane Futter's grave. Sue and Brian Armstrong shared extensive maps and notes with us and explained the background to many restoration decisions.Thankyou.

- Exciting materials;John Manning read to us the letter -date unknown,by "Long Tom"-LFSmith of "Washed Away Creek"-requesting supplies to be obtained for him and detailing his disgust with some cuts of meat. He blamed his 'rheumaticks'for being unable to journey to Goulburn town himself. He perished some time later from a fire in his hut .Long Tom was stiff when found and his body was transported through Bungonia village on the way to a burial . Unfortunately the approaches to the creek crossing were so steep-he slid out of the cart!!-We must assume the story does not END there--
- Meetings are Second Saturday bi-monthly.
- Calling interested people in the District of Bungonia and surrounds.

Have you a History Project you would like to work on?

You want to know the history of your land and previous owners-

Perhaps you have an interest in recording the old-timer's stories BEFORE they pass on?

Photographing sites?

Join us –share ,learn, have a laugh and brush the dust off our local history.

Subscriptions due \$5.00 annual membership to treasurer New members welcomed-\$5.00 joining fee plus one year's membership of \$5.00.

We are planning a very interesting series of outings during the coming year.

Next Meeting 13 March 1 PM at Progress Hall in the Village. All Welcome

POSITION VACANT

Local person wanted to help casually on Balyarta Park, General farm duties, able to handle a horse helpful but not necessary, just not scared of them

Call Cathie Bracks-Hohos: 4844 4335

INVERARY CREEK
LANDCARE GROUP INC.

K.M. COOPER .
PRESIDENT.
48444214

590 INVERARY RD
BUNGONIA
2580

UPDATE

MORE ON CHICKENS

A HOT TOPIC

AROUND INVERARY

As I have stated before Landcare is very interested in sustainable land use and opposes any land use which has a potential to damage our already stressed environment. Dept of Agriculture have copies of N.S.W. Meat Chicken Farmers Guideline 2002 and I would recommend anyone who has any concern to study this document
Any neighboring properties should be very worried about the impact of water usage. Meat chicken farms use a considerable amount of water for drinking, cooling and cleaning. Water usage from surface and ground water resource must be managed within a sustainable yield so the integrity of the water resource and the ecosystem that it supports are not compromised. From the guidelines " each bird produced requires about 8 litres of drinking water in it's lifetime" . This alone equates to 76.8 ML

Another recommendation in the guidelines "meat chicken farms should not be constructed an areas with shallow ground water. The vulnerability of the ground water resource to pollution depends on the depth of the ground water, soil type, and the nature of the aquifers of the region ." The proposed site is on highly cracking basalt soil which are very permeable allowing direct access to the shallow water table. The shallow water table is very obvious by a line of permcment surface spring around the basalt area. The water table at "Inverary" is only a permanent 4 metres.

Inverary Landcare group has completed fencing out and replanting several kilometres of wet creek lines along Limekiln and Inverary Creeks. These wetlands are dependant on spring water. Again the guidelines " local wetlands must be protected for their role in filtering sediment and nutrients and providing a diversity of wildlife habitat" Any excess use of bore water as envisaged will certainly put these areas at risk The guidelines also recommend for biodiversity " a new facility should avoid building within close proximity to wetlands or waterways used by migratory water fowl that may carry aviary diseases " The dams and wetlands on "Inverary" are often frequented by breeding Mountain Ducks and Swans. We are, according to the bird watchers who conducted local surveys over several years on the migratory route to Lake George.

There are over 40 spring fed dams and bores around the area used for domestic and stock use. The harvestable right for surface water is certainly not sufficient for both for both stock and domestic use so particularly in a season such as this many properties are highly dependant on a reliable source of ground water. This is already under stress following a succession of dry seasons so any major extraction as required as required for the chicken complex would be disasterous. It is also interesting in the guidelines "recommend an on site focus meeting " If this did occur on site it would have been at least polite to invite the immediate neighbors. The Landcare Group was mentioned as an interested local organisation who may be affected. We are still waiting to be contacted Mr Developer !!!!!

K.M. COOPER
PRESIDENT
INVERARY CREEK LANDCARE

INVERARY CREEK

in Council

with Councillor Inda Evans

Welcome to 2004!

I hope this year brings each of you happiness and prosperity; and for the community – peace of mind and unity.

Last year ended with no major development applications lodged for the Bungonia district, and no application for a mega chook farm.

Because of printing deadlines, the January Council meeting will be covered next month.

In the meantime, we have improved the status of a series of our guideline documents, including the one on Poultry, to that of Development Control Plans.

This gives the "Control Plan" legal status which can be more effectively enforced.

Boundaries and Amalgamations

The year ended in lots of uncertainty about the future of Local Government and everything is still up in the air.

As the *Times* goes to print, the Boundaries Commission is holding a week of hearings in Canberra.

It is the first time in history that this NSW Government body has convened in another State and outside the geographical area that it is reviewing.

But I guess the Minister and his department are very wary of the mass response from Mulwaree Shire residents at their previous public meeting in Goulburn.

The Mayor and General Manager addressed the Commission as did representatives from the community action groups that were formed last year. Our area's action group representative was David Humphreys.

I sincerely thank all of them for the time and effort they have put into this process. It has been difficult and stressful for everyone and the process is nowhere near completion yet.

The biggest problem is that the State Government is still not listening to the people.

What the Commission is Looking At

The Boundaries Commission has been given the two proposals generated by Professor Daly – for a Southern Tablelands Council and another super council around the ACT.

The Goulburn/Crookwell/Gunning proposal to carve up Mulwaree has not been forwarded to the Commission, nor have any of Mulwaree Shire's proposals.

So the Boundaries Commission is not looking at a stand-alone option for us.

Instead, the Department has submitted their own alternatives for a carve up of Mulwaree in the form of

1. a proposed Greater Argyle Council which would include most of the north and north eastern parts of the Shire (including the Bungonia and Windellama areas) merging with Goulburn city; and
2. a proposed Upper Lochlan Shire which would include the Taralga district and the whole of Crookwell Shire merging with other areas to the south west.

Neither of these proposals have any relevance to water catchment areas or communities of interest.

Now Crookwell and Gunning Shires have lodged a proposal with the Minister for a voluntary amalgamation and the Minister has deferred their Council elections until December.

Our Position

Given the Minister's apparent refusal to entertain our standing alone as we are, the next option the community gave Council a mandate for was to consider a direct amalgamation with Goulburn. This would be preferred to any super council that would bring many more problems than it would solve.

If a merger with Goulburn does take place, I urge you to give a lot of very careful consideration about how you want to see such a new Council run and by whom.

I'm sure there will be more to say on this subject next month.

Contact Your Councillor

If you have any issues you would like to discuss, please feel free to contact me by phone – 4841 1900 (home) or 4841 1648 (Post Office), mobile – 0412 778 235 or 0438 778 235, fax – 4841 1677 or email – indapat@ozemail.com.au